

# BIM / CAD SERVICES FOR ARCHITECT INDEX

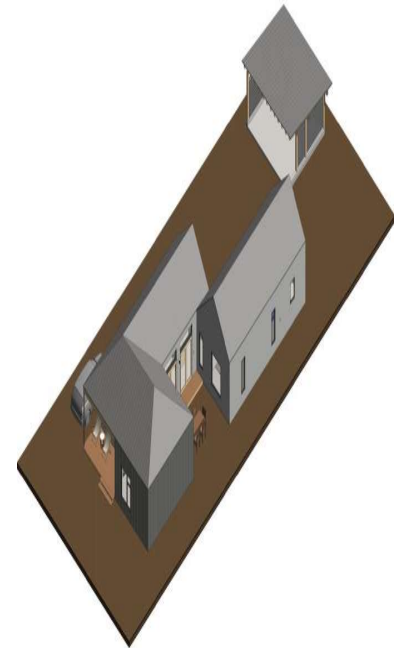
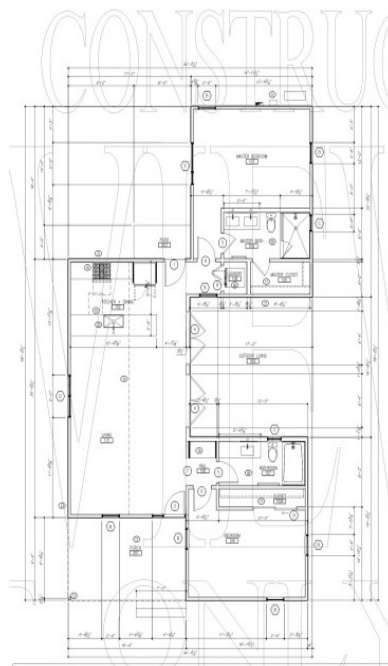
- BIM Benefits in Architectural Services
- Services we do
- Process we follow
- Quality control
- Why DESIGN AND DRAWING SOLUTION
- Project Snapshots
- Contact us



---

**MUMABI|INDIA|NM|USA**  
[www.dndrawing.com](http://www.dndrawing.com) |US +1.720.897.7684|  
|Office : +919137718446|

---



## BIM Benefits in Architectural Services

**Basic Coordination:** Streamline communication with 3D visualization among all stakeholders for quick decision making during design and pre construction phase.

**Sales Tool:** 3D visualization enables potential investors, buyers and owners to understand the layout and spatial interrelationships of a project.

**Bidirectional Associativity:** Ensures all changes to any part of the building need to be made only once. Ensures annotation decisions, such as a changed sheet scale properly resizing all annotations and graphics, need to be made only once.

**Efficiency:** Eliminate 2D by generating CD set from BIM models which are accurate and coordinated.

**Quality:** Ensures all data and graphics, details, schedules, drawings and sheets in the CD set is current and coordinated.

**Conceptual Cost Estimating:** Quantity take offs can be extracted from model which, when linked with the prevalent rates of materials, labor and construction techniques, can enable the stakeholders to prepare cost estimates.

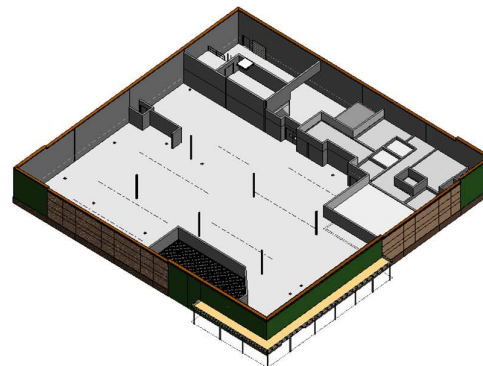
**Integrated Building Materials:** Real-world materials drive detailed plan, section and elevation representations of building components to save documentation time. The integrated Accurender, raytracing and radiosity engine uses the same materials, saving time and effort when producing visualizations.

- Specialty Equipment
- Care Cart and Desk
- Caseworks, Sheets & Watches
- Mechanical Equipment's
- Electrical Fixtures
- Structural Components
- Interior Decoration Accessories
- Specialty Equipment



## 2. Schematic stage modelling

LOD 200 models include elements where the Masses are replaced with Generic Components. Analysis based on Overall Systems can be performed and Quantities based on Specific Elements can also be obtained. The major characteristics of components are their thickness and width, allowing quick quantity-takeoffs.



## Services we do

### 3D Modelling

#### 1. Family Modelling

We at D & D, instantly produce the family as mentioned below to support the project to architects.

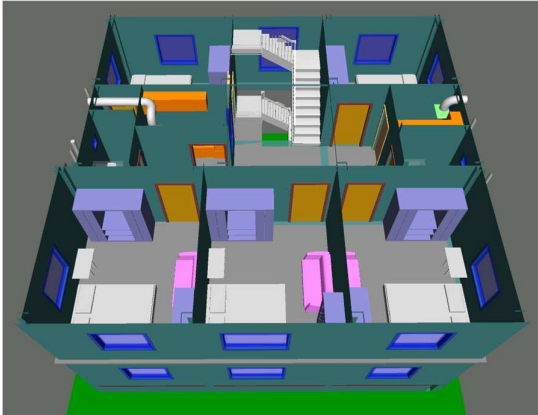
- Cabinet and Drawer
- Stairs & Railings
- Plumbing Fixtures
- Fixture & Furniture
- Doors & Windows

#### 3. Detail stage modelling

Detailed Design is next stage of schematic design and worked out in greater details. The details are reflected in the model, corresponding roughly with the LOD 300 Revit model. This also provides the client with drafted to-scale drawings, illustrating how the project would look like after the construction gets over. LOD 300 models include elements where the Generic Components have been replaced with

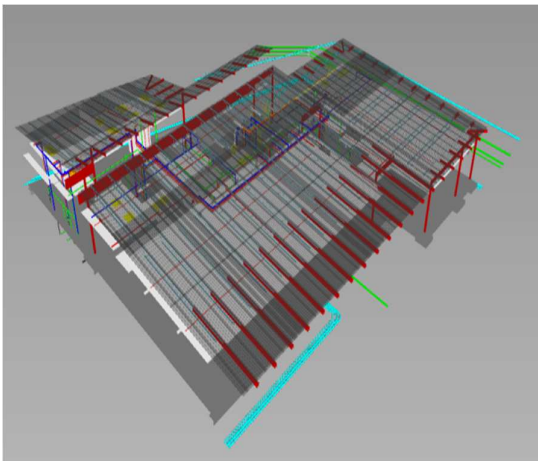
fully defined Assemblies. Analysis based on Specific Systems can be performed and Quantities based on Materials can also be obtained.

At LOD300, the model can be leveraged for the generation of traditional Construction Documents and Shop Drawings and can be used for the analysis of Energy Performance, Clash & Cost.



### Service co-ordination modelling

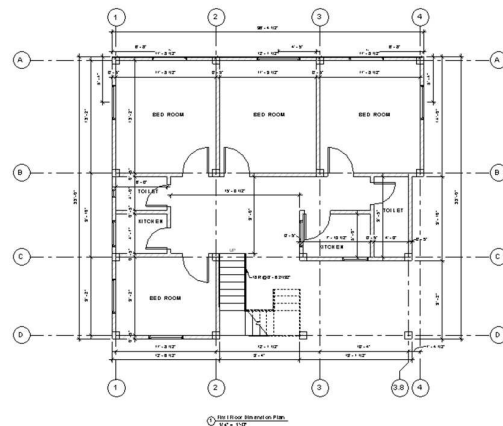
Coordination between different elements of a building is essential for the building design to be efficient. The gaps between design disciplines are a common cause for change orders in the field of construction and can be eliminated by early coordination among all trades (Architecture, Structure, MEP), thereby closing the design loopholes.



### Construction document preparation support

Construction Documentation is a bridge between building design and physical building form. It encompasses the preparation of drawings and specifications that set forth the detailed requirements for the construction of a building project. In terms of modelling, this corresponds roughly with the LOD 400 Revit model with all information of the building.

- Overall Floor Plan
- Enlarged Floor Plans
- Typical room layouts
- Elevations (All 4 Sides)
- Building sections
- Partition Details
- Typical Details
- Door & window Details
- Floor Finish Plans
- Floor Finish Details
- Reflected Ceiling Plans & Details
- Furniture Layout plans
- Landscape plans & Details (As required)
- Interior Elevations
- Egress Plans
- Quantity take offs
- Door & Window Schedules



LOD 400 Models include elements that are accurate in terms of size, shape, location, quantity and orientation with complete fabrication, assembly and detailing information. At this Level, the Model has non-geometric (3D) information like text, dimensions, notes and 2D details and it is a complete representation of all the proposed

elements. Analysis can also be performed at this level such as Energy Performance, Clash Detection and Sequencing & Cost.

### Interior rendering services

Interior has also the expertise in assisting architects with the development of interior design - be it for renovation of building or new building. Our team assists architects in their

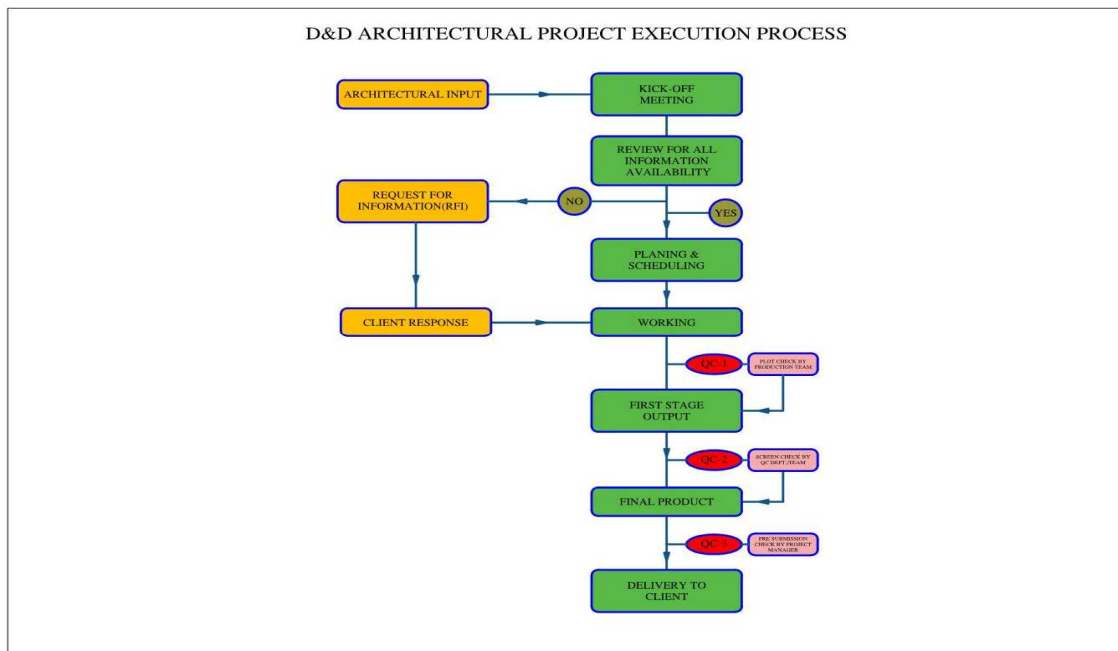


presentations by using AutoCAD, Revit, 3DS Max, AutoCAD Architecture, Photoshop, Illustrator, SketchUp, Naviswork, Bluebeam.

### Process we follow

We have a standard BIM Process, which has been prepared, based on our experience & expertise, which we follow for all the Architectural projects, unless the project has other requirements. Below is a simple flow chart, which explains the process in detail.

The process has been broken down as per the responsibility. We have a Quality Process in place, to check the quality of the deliverable that is being provided to the client.



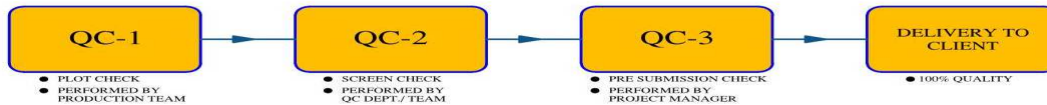


Team performs a more detailed comparison of

Specific Checklist is prepared to review/check the deliverables and main objective check the following Clashes (Old/New), Elevation,

## Quality control

D&D QUALITY CONTROL PROCESS



The main objective of the quality control (QC) process is to detect errors and rectify it. Ensuring quality is a group effort and our dedicated QC team is led by a highly qualified and experienced Manager in MEP Coordination and Quality Control. The entire QC process is handled in three phases

### Quality Check – 1(QC-1)

The model is plotted on paper and a preliminary grid by grid check is done comparing it with the original contract documents through Team Member.

### Quality Check – 2(QC-2)

## Why Design and Drawing Solution

### Communication

Our team is available to clients through a number of communication channels including:

1. **Email** for reports and interactions.
2. **Telephonic** communication through VOIP connection.
3. **Zoom Virtual** for online meetings, presentations and conversations.
4. **Dropbox and Autodesk** storage for FTP process.

### Delivery in Time

Our skilled team of professionals can provide quick turnarounds on complex projects. D & D has successfully completed several large-scale commercial projects across multiple verticals including. Health Care, Hospitality, Airports, University Centers, Data Centers, Retail

Routing, Fittings, etc.

Construction point of view:

Window Standard details  
Door Standard Details  
Floor Layout  
RCP details  
Interior Details for Toilet & Kitchen  
Annotations & Dimensions,

### Quality Check – 3 ( QC-3)

The Project Manager conducts the pre-shipment check before sending them to the client

Centers, Convention Centers, Commercial, Industrial and Residential Projects.

### Skilled and Efficient Team Members

All team members are specialize in the latest BIM software's like Revit, (Revit, Revit MEP, Revit Architecture and Revit Structure), NavisWorks, Autodesk Fabrication ,AutoCAD MEP etc.

### Experienced in US BIM execution process.

Our top management is having more than 10 years of experience in BIM execution US process and standards which leads the timely completion of complex projects.





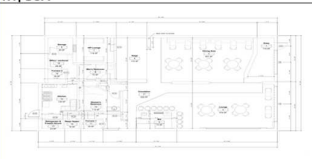

### Project Cost Optimization

D & D delivered a high quality product within a short timeline and provided coordination










support. This allowed for a faster and more cost effective project completion.

## Project Snaps

We have already delivered more than 100 BIM/CAD projects throughout the world basically in countries like USA, UK, Australia and New Zealand & India. Below are latest project details of BIM/CAD services for Architectural.

	
Hotham Luxe NSW AUS	Hotham Hamptons NSW AUS
	
Hacienda Oaxaca Flanders Hill TX USA	Tremont CO USA
	
EventSpace GEORGIA USA	Reuss / Wheeler TX USA

## Contact

<b>Registered Office, Mumbai</b>		<b>Channel Partner-USA</b>				
<b>DESIGN AND DRAWING SOLUTION</b>		<b>Engineering Enviorment</b>				
 <b>DESIGN AND DRAWING SOLUTION</b> ONE STOP ARCHITECTURE MEP   BIM   CAD   SOLUTION		 <b>Engineered Environments, LLC</b>				
Plot No X2/1, MIDC PH-II Dombivli East, Central Mumbai – 421203, Thane, MH, INDIA		9210 SAN MATEO BLVD NE ALBUQUERQUE, NEW MEXICO 87113, United State				
<b>Kolkatta office:-</b>		<b>Barker Blue Inc</b>				
 <b>DESIGN AND DRAWING SOLUTION</b> ONE STOP ARCHITECTURE MEP   BIM   CAD   SOLUTION		 <b>barkerblue</b>				
Geetanjali Apartment, 39,Bangur Avenue , C Block ,Lake Town , Kolkata-55 ,West Bengal , India		363 N Amphlett Blvd, San Mateo, CA 94401, United States				
US VOIP	(+1)-214-431-5193					
Office No	(+91)913-771-8446					
Whats App	(+91)913-771-8446					
Email -		info@ndrawing.com/irshad@ndrawing.com				